

ad notam[®]

HIDDEN TECHNOLOGY – TECHNOLOGY BECOMES INVISIBLE.

GLASS
&
MIRROR



OWNER'S MANUAL

ON WALL

For On Wall Installation

Register your product and get support at: www.ad-notam.com

INTRODUCTION

Thank you for choosing ad notam.
You acquired a high-quality product; ad notam means supreme technology and design.

CONTENT

• SAFETY	3
• WARNINGS	4
• CLEANING AND PRODUCT CARE	5
• ENVIRONMENTAL	5
• AD NOTAM CONFIGURATOR	6
• PRODUCT DELIVERY	7
• MOUNTING YOUR AD NOTAM	8
- <i>ON WALL MOUNTING - WALL PREPARATION</i>	9
- <i>ON WALL MOUNTING - FINAL ASSEMBLY</i>	14
• ADJUSTING YOUR DIGITAL CLOCK	15
• COPYRIGHTS, LICENCES & CERTIFICATES	16
• TROUBLESHOOTING	16
• SERVICE & SUPPORT	16
• CONTACT INFORMATION	16

SAFETY

To prevent damage to your ad notam product or injury to yourself or to others, read the safety instruction in their entirety before installing and operating the product. Keep these safety instructions where all those who use the product will read them. Warranty will be null and void for any damage resulting from installation and operation not respecting these instructions.

CAUTION
RISK OF ELECTRIC SHOCK DO NOT OPEN
CAUTION: To reduce the risk of electric shock, do not remove cover (or back). There are no user serviceable parts inside. Refer all servicing to qualified personnel.



THIS ICON MARKS WARNING. Indicates that high voltage is present inside. It is dangerous to make any kind of contact with any internal part of this product.



THIS ICON MARKS WARNING. Indicates important literature concerning operation and maintenance. To prevent possible injury, read all warning before using this product.



THIS ICON MARKS CAUTION. To prevent the spread of fire, keep candles or other open flames away from this product at all times.

WARNINGS

- ⚠ LIQUIDS. Never expose the product to rain or water. Never place liquid containers, such as vases, near the product. If liquids are spilt on or into the product, disconnect it from the power outlet immediately. Contact your authorized dealer immediately to have the product checked before use.
- ⚠ GLASS. Parts of this product are made out of glass. Handle with care to avoid injury or damage.
- ⚠ HANDLING. Parts of this product are made out of glass and sharp material. Always wear safety shoes and gloves when handling the products or its packaging.
- ⚠ HANDLING. ad notam products are made of heavy components. Two or more people may be needed to transport large goods. When handling the goods make sure to separate and disconnects all parts before any movement. Do not put stress on the LCD nor glass/mirror. Prepare the environment properly to gently accommodate any item on a adequately soft and cushioned surface.
- ⚠ GLASS. The corners and edges of the glass are very delicate. Take care that they do not hit the wall, ceiling or floor in any way to avoid damages and split-offs.
- ⚠ IRREGULAR OPERATION. If this product does not operate normally, in particular, if there are any unusual sounds or smells coming out of it, unplug it immediately and contact an authorized dealer or service center.
- ⚠ WET ENVIRONEMT. For installations in wet-rooms specific installation guidelines apply, which are to be seen in the context of placing a power adaptor outside of certain protection zones. These regulations differ by region. Please contact a specialist for this. In Germany electrical installations are to be performed by a skilled technician, while observing the regulations of the standard DIN VDE 0100 T.701.
- ⚠ INDOOR USE. The product is specifically designed for indoor use. There is danger of fire and of electric shocks and damage to the device if it is operated outdoors.
- ⚠ VENTILATION. Never insert objects into nor cover the ventilation slots or other openings on the product.
- ⚠ HEAT SOURCES. Do not place this product near or over heat sources or where it is exposed to direct sunlight. Never expose your product, remote control or batteries to excessive heat.
- ⚠ FLAMABLE GAS. Do not use in the presence of flammable gas, as this could result in explosion or fire.
- ⚠ CHILDREN. Keep out of reach of children. Failure to observe this precaution could result in injury.

CLEANING AND PRODUCT CARE

CLEANING. Use a soft damp cloth (cotton, flannel, etc.) and gently wipe the surface of the product. Wiping with a hard cloth or using strong force may scratch the surface of the product. Never touch, push, rub or strike the screen with any object.

CLEANING. Avoid using benzene, thinner and other solvents as they may deform the product and may cause the paint to peel off. Using a chemical cloth (wet/dry sheet type cloth, etc.) may cause damages and corrode the product. To avoid deformation and color fading, wipe off water drops as soon as possible.

ENVIRONMENT. On rare occasions, depending on temperature and humidity, minor condensation can occur on the inside of the glass front. To prevent this, do not expose the product to direct sunlight, heat or extreme humidity. If condensation occurs, it will disappear spontaneously after the product has played for a few hours.

ENVIRONMENT. The product must be stored in a dry and well ventilated room, without extreme temperature fluctuations. Heat sources and aggressive active substances may not be stored in the proximity of this product

ENVIRONMENTAL

ad notam aims to design, produce, deliver and dispose eco-friendly products. Our environmental policy applies to the entire product lifecycle and business activities.



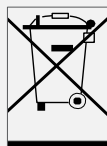
LOW STANDBY POWER

Our highly advanced power circuitry brings down power consumption to an extremely low level while in standby mode



EUROPEAN ENERGY LABEL

The European Energy Label informs you on the energy efficiency class of this product. The greener the energy efficiency class of this product is, the lower the energy it consumes. On the label, you can find the energy efficiency class, the average power consumption of this product in use and the average energy consumption for 1 year based on 4 hours' operations per day.

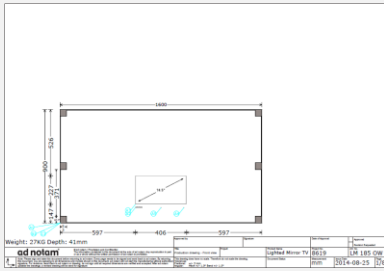


END OF USE

When this crossed-out wheeled bin symbol is attached to a product the product is covered by the European Directive 2002/96/EC. Inform yourself about the local separate collection system for electrical and electronic products. Act according to your local rules and do not dispose your old products with your normal household waste. Correct disposal of the product helps to prevent potential negative consequences for the environment and human health.

AD NOTAM CONFIGURATOR

Your own unique product, made by ad notam, has been designed with ad notam online configurator. Your configuration is a valuable reference. Keep a hardcopy of your configuration with this owner manual.

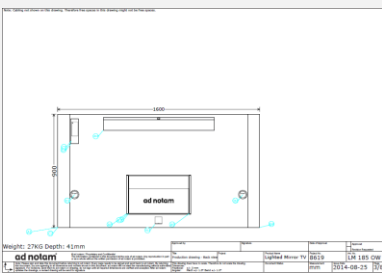


The *Shop Drawing - Front View* is necessary for Mirrors and Glass production, the most visible item of any device produced by ad notam. The *Front View* consists of 2 pages:

Art. No.	Art. Description	Unit	Quantity	Width	Height	Depth	Diameter	n-Pos.	n-Pos2
Basic Model									
A1	Appt Mirror Center Clear View	art	1	2000	800	5			
A2	Support Single Hole 20"	art	1	400	225				
A3	Composite Kit 20"	art	1						
A4	Support Single Hole 20"	art	1	400	225				
A5	Support Single Hole 20"	art	1	400	225				
Mirror & Glass Section									
Glass 400x225									
Lighting Mirror Section									
A6	Lighting Mirror Section	art	1	100	10				
Weight: 27kg Depth: 42mm									
ad notam									

Shop Drawing - Front View Legend - Front View

These 2 pages are directly linked and show respectively visualization and legend.

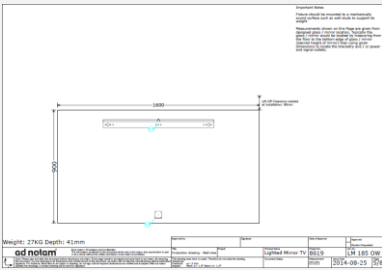


The *Shop Drawing - Back View* is necessary for Mirrors, Glass and additional articles pre-assembly at factory. The *Back View* consists of 2 pages:

Art. No.	Art. Description	Unit	Quantity	Width	Height	Depth	Diameter	n-Pos.	n-Pos2
Basic Model									
A1	Appt Mirror Center Clear View	art	1	2000	800	5			
A2	Support Single Hole 20"	art	1	400	225				
A3	Composite Kit 20"	art	1						
A4	Support Single Hole 20"	art	1	400	225				
A5	Support Single Hole 20"	art	1	400	225				
A6	Support Single Hole 20"	art	1	400	225				
A7	Support Single Hole 20"	art	1	400	225				
Lighting									
A8	Lighting Mirror 20"	Lighting Color 4000 Single Glass LED Lamped	0.12mm	84	84	84			
A9	Lighting Mirror 20"	Lighting Color 4000 Single Glass LED Lamped	0.12mm	84	84	84			
A10	Lighting Mirror Section Mirror 20"	Lighting Color 4000 Single Glass LED Lamped	0.12mm	84	84	84			
A11	Lighting Mirror Section Mirror 20"	Lighting Color 4000 Single Glass LED Lamped	0.12mm	84	84	84			
A12	Lighting Mirror Section Mirror 20"	Lighting Color 4000 Single Glass LED Lamped	0.12mm	84	84	84			
A13	Lighting Mirror Section Mirror 20"	Lighting Color 4000 Single Glass LED Lamped	0.12mm	84	84	84			
Mirror & Glass Section									
Glass 400x225									
Lighting Section									
A14	Lighting Section	art	1	100	10				
Weight: 27kg Depth: 42mm									
ad notam									

Shop Drawing - Back View Legend - Back View

These 2 pages are directly linked and show respectively visualization and legend.



The *Shop Drawing - Wall View* is necessary for device installation on site. The *Wall View* consists of 2 pages:

Art. No.	Art. Description	Unit	Quantity	Width	Height	Depth	Diameter	n-Pos.	n-Pos2
Basic Model									
A1	Appt Mirror Center Clear View	art	1	2000	800	5			
A2	Support Single Hole 20"	art	1	400	225				
A3	Composite Kit 20"	art	1						
A4	Support Single Hole 20"	art	1	400	225				
A5	Support Single Hole 20"	art	1	400	225				
A6	Support Single Hole 20"	art	1	400	225				
A7	Support Single Hole 20"	art	1	400	225				
Mirror & Glass Section									
Glass 400x225									
Lighting Section									
A8	Lighting Section	art	1	100	10				
Weight: 27kg Depth: 42mm									
ad notam									

Shop Drawing - Wall View Legend - Wall View

These 2 pages are directly linked and show respectively visualization and legend.

Art. No.	Art. Description	Unit	Quantity
Basic Model			
A1	Appt Mirror Center Clear View	art	1
A2	Support Single Hole 20"	art	1
A3	Composite Kit 20"	art	1
A4	Support Single Hole 20"	art	1
A5	Support Single Hole 20"	art	1
A6	Support Single Hole 20"	art	1
A7	Support Single Hole 20"	art	1
Mirror & Glass Section			
Glass 400x225			
Lighting			
A8	Lighting Section	art	1
Weight: 27kg Depth: 42mm			
ad notam			

The *Shop Drawing - Parts List* is a detailed articles list comprising all necessary parts for pre-assembly and final installation. The *Parts List* consists of 1 or more pages:

Shop Drawing - Parts Lists

These pages are directly linked and show complete scope of delivery (items and processing services):

PRODUCT DELIVERY

WOODEN CRATE AND GIFTBOX INSPECTION

You purchased a high end device. Verify wooden crate and gift box integrity before unloading the product. If damage is noticed write all the information on the bill of lading and hand it to the driver of the forwarder. Pictures will be required for the claim process. You can consult your ad notam reseller for additional information.



WOODEN CRATE

WHAT IS IN THE BOX

Please check the following contents for completeness before using the product.



GLASS & MIRROR



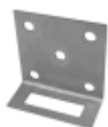
OWNER'S MANUAL



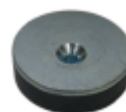
DIGITAL CLOCK
IR REMOTE (Optional)



WALL MOUNTING
PLATE (Optional)



WALL LOCKING
PLATE (Optional)



FIXATION MAGNET
(Optional)



DISTANCE RING
(Optional)

MOUNTING YOUR AD NOTAM

BEFORE YOU START

Safety, environment, expert tips!

SAFETY

WARNINGS

- ⚠ SAFETY. To prevent damage to your ad notam product or injury to yourself or to others, read the safety instruction in their entirety before installing and operating the product. Keep these safety instructions where all those who use the product will read them. Warranty will be null and void for any damage resulting from installation and operation not respecting these instructions.
- ⚠ WALL FIXINGS. ad notam doesn't provide screws and dowels with this product. Consider the construction environment, wall type, product weight and positioning when selecting raw bolts or resin anchors.
- ⚠ QUALIFIED PERSONNEL. Mounting this product requires structural measures and special skills. Refer exclusively to qualified personnel.
- ⚠ WOODEN CRATE. The wooden crate is securing glass and mirror. Incline the wooden crate adding a thick spacer (eg. 10 cm wooden bar) underneath the front foot to avoid all glass and mirror to fall off the crate while removing the front panel. Open carefully making sure a second person is on site.
- ⚠ ORIGINAL MATERIAL. Always use ad notam supplied wall brackets and original spare parts to perform installation.

ENVIRONMENT

ad notam products include heavy, bulky and delicate items. To prevent damages to your ad notam product or injury to yourself or to others, prepare the installation environment properly.

CAUTIONS

- ✓ ENVIRONMENT. Clean the handling and installation environments properly before installation.
- ✓ HANDLING. Handling ease requires proper planning. Verify size, turning angles, bumps and potential hurdles before handling.
- ✓ ENVIRONMENT. ad notam mounting systems are engineered for vertical use only. Verify walls' verticality and items vertical and horizontal alignment to prevent serious injuries and product damage.
- ✓ HANDLING. Cushions the floor properly using soft anti slip mats near the handling areas. Lay the items gently on these cushioned anti slip surfaces when needed.
- ✓ HANDLING. Tilt the mirror top to the wall with an adequate angle of incidence when resting.

EXPERT TIPS

- ✓ TOOLS ad notam products installation requires specific professional tools. Verify the following page for a comprehensive list.

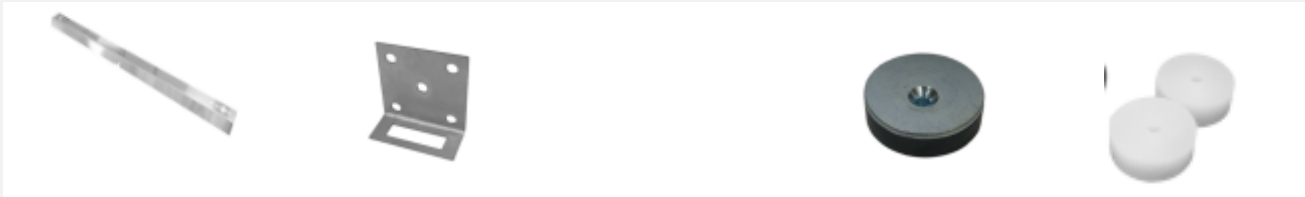
MOUNTING YOUR AD NOTAM

ON WALL MOUNTING - WALL PREPARATION

Your own ad notam has been pre-assembled according to your configuration instruction. The product back view including pre-assembled items is visible on your *shop drawing Page 3 (Back View)* you can find additional information on the visible items on *page 4 (Legend - Back View)*.

To determine the proper position of your ad notam on the wall the ad notam configuration provides an ideal Wall View preparation. The Wall View (including necessary items) is visible on *shop drawing page 5 (Wall View)*. Consult your *shop drawing page 6 (Legend - Wall View)* for additional information concerning spare parts necessary for installation. Refer to these pages during installation.

✓ EXPERT TIPS – TOOLS



WALL MOUNTING PLATE (Optional)

WALL LOCKING PLATE (Optional)

FIXATION MAGNET (Optional)

DISTANCE RING (Optional)



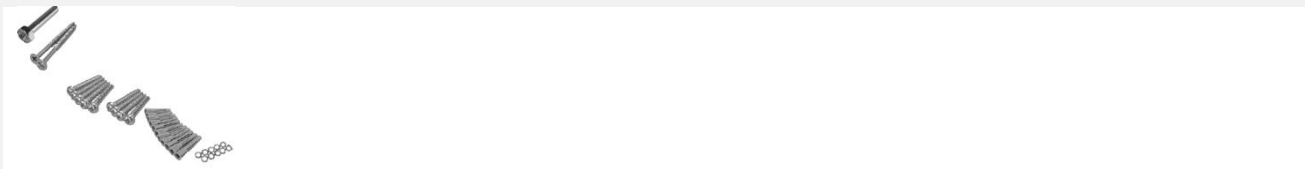
Power drill

Carpenter Pencil

Measuring tape

Level

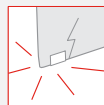
Screwdriver Set
Phillips Tip



Bolts, screws, screw anchors, lock washers



Please read the safety precautions before positioning the product. Always use the supplied wall brackets and parts. Wall mounting this product requires special skills and should only be performed by qualified personnel. Electrical connections are to be performed by a skilled technician following local regulations. Two people are required to lift and carry a product that weights more than 25kg or 55lbs. ad notam does not guarantee the efficiency of screws and dowels delivered with this product. Those may be replaced on site considering the construction environment, type of wall, product weight and positioning. ad notam bears no responsibility for improper mounting or any mounting that results in accident or injury.

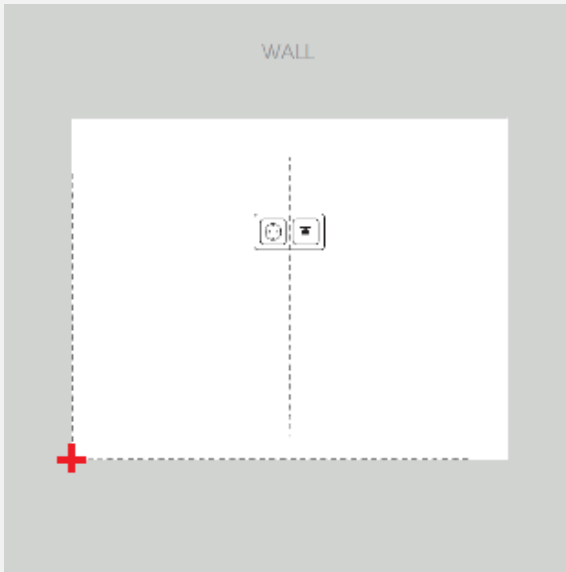


Please Note:

The corners and edges of the glass are very delicate. Take care that they do not hit the wall, ceiling or floor in any way to avoid damages and split-offs.

STEP 1 - WALL PREPARATION

- The following slides explain how to identify and mark the drilling points on the wall. ad notam provides different mounting combinations. Verify your own *shop drawing page 6 (Wall View – Legend)* to identify your wall mounting option. The column Art. Description provides the description of the selected items necessary for your wall preparation.



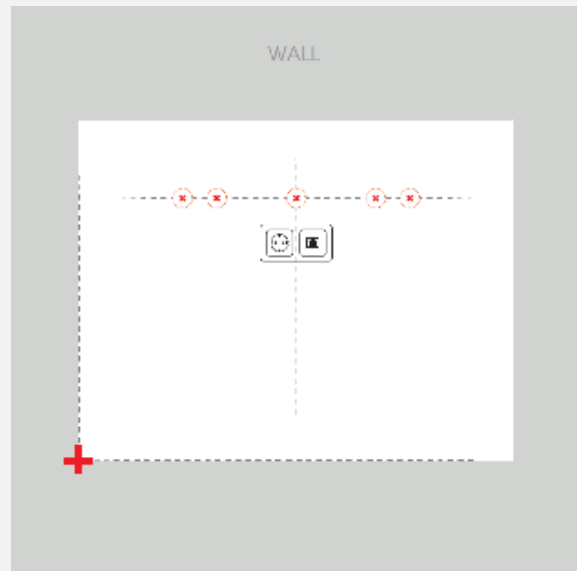
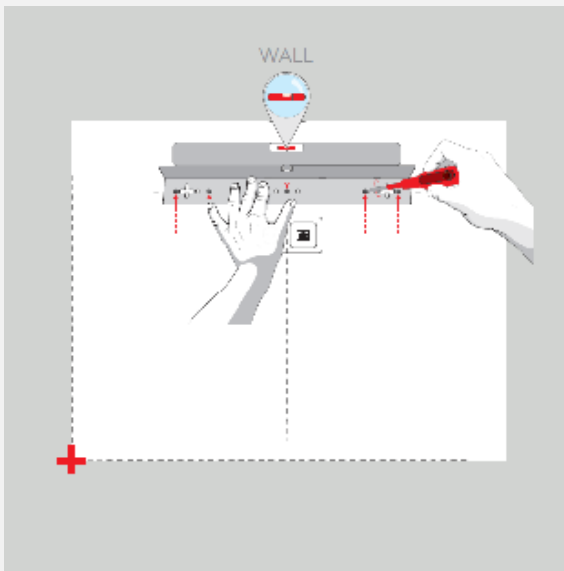
Art.	Art. Ref.	Art. Description	Unit	Quantity	Width	Height	Depth	Diameter	x-Position	y-Position
Basic Model										
A1		Magic Mirror Crystal Clear Slim	pcs	1	1500	900	5			
A1.2		Wall Locker Plate 36 (DWMS)	pcs	1	60	60	30		770	30
A1.3		Wall Metal Plate 880_36 (DWMS) (1)	pcs	1	880	68	33		800	107

Footnotes
 (1) Caution! The x/y middle-position of the Wall Metal Plate 880_36 (DWMS) is referred to the glass top left point

Weight: 27KG Depth: 41mm

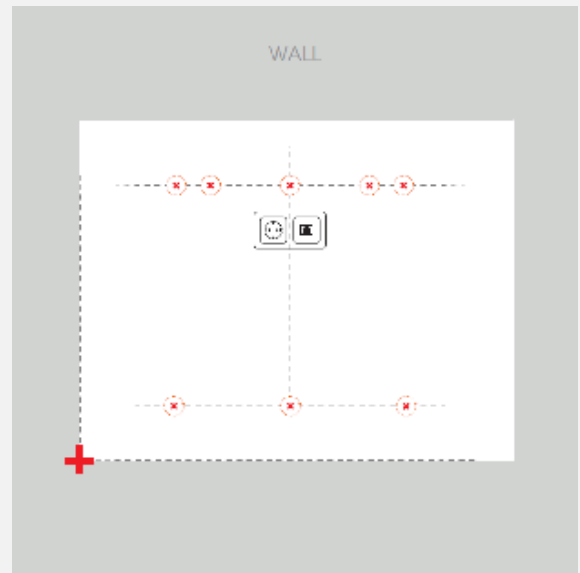
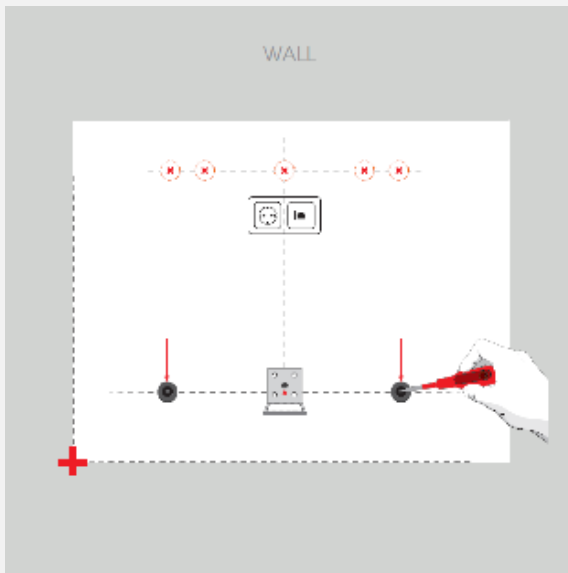
ad notam		Legend - Wall view		Lighted Mirror TV		8619		LM 185 OW	
				mm		2014-08-25		6/8	

- Reference point. Identify your ad notam position on the wall and identify the bottom left corner of the crystal. Mark this point with the pencil.
- Reference point (Point 0) is used in the ad notam *shop drawing Wall View – Legend (Page 6)*. Drilling points coordinate are starting from here.
- Draw the axes. Identify the Vertical and Horizontal axes on the wall starting from the reference point. Use the Level to verify vertical and horizontal alignment.



- Art. Description Verify your own configuration page 6 (Wall View – Legend) to identify your mounting option. The column provides the description of the selected items necessary for your wall preparation.
- Art. Description - WALL MOUNTING PLATE. (*Not found? Move to the next step.*) Verify y-position and x-position. These coordinates correspond to the WALL MOUNTING PLATE middle screw drilling point. Mark the point . Take the WALL MOUNTING PLATE and align the middle screw position with the marked point. Use the level to verify horizontal alignment and mark the other drilling points.

✓ WALL MOUNTING PLATE coordinates are starting from the Upper left corner.



7. Art. Description - FIXATION MAGNET. *(Not found? Move to the next step.)* .) Verify x-position and y-position. These coordinates correspond to the FIXATION MAGNET middle screw drilling point. Start from the reference point moving upward on the vertical axe and mark the point (y-position). Plot an horizontal line verifying horizontal alignment using the level. Measure and mark the drilling point on this line according (x-position). Caution: you should have 2 or more FIXATION MAGNETS. Repeat the procedure for each one of them.

8. Art. Description - WALL LOCKING PLATE. *(Not found? Move to the next step.)* Verify y-position and x-position. These coordinates correspond to the WALL LOCKING PLATE middle screw drilling point. Start from the reference point moving upward on the vertical axe and mark the point (y-position). Plot an horizontal line verifying horizontal alignment using the level. Measure and mark the drilling point on this line according (x-position).

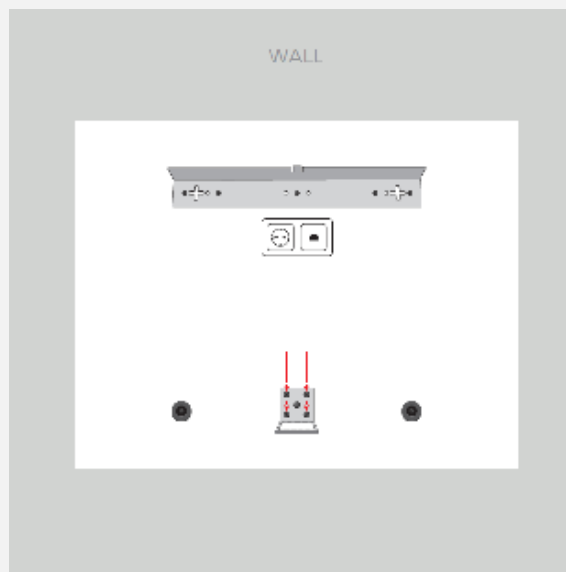
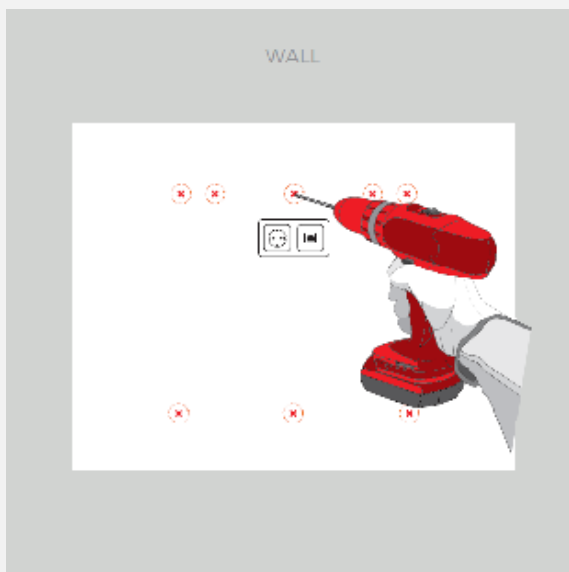
STEP 2 - WALL PREPARATION

1. The following paragraphs explain how to mount the different elements on the wall. ad notam provides different mounting combinations. Verify your own *shop drawing page 6 (Wall View – Legend)* to identify your wall mounting option. The column Art. Description provides the description of the selected items necessary for your wall preparation.

✓ ARCHITECTURAL Structural measures must be accomplished for an on-wall installation. ad notam declines any liability for the screws and screw anchors used on site.

✓ ENVIRONMENT. ad notam mounting systems are engineered for vertical use only. Verify walls' verticality and items vertical and horizontal alignment to prevent serious injuries and product damage.

2. You marked all drilling points on the wall. Drill at the marks and proceed adding the appropriate screw anchors.



3. Art. Description Verify your own configuration page 6 (Wall View – Legend) to identify your mounting option. The column provides the description of the selected items necessary for your wall preparation.

4. Art. Description - WALL MOUNTING PLATE. *(Not found? Move to the next step.)* Secure the WALL MOUNTING PLATE starting from the middle screw. Verify other screws anchors alignment before firmly locking the first screw. Proceed with the other screws mirroring their position on the right and left side.

5. Art. Description - FIXATION MAGNET. *(Not found? Move to the next step.)* and DISTANCE RING. Secure the FIXATION MAGNETS tightening the middle screw. Verify your product depth and vertical alignment and add the DISTANCE RING.

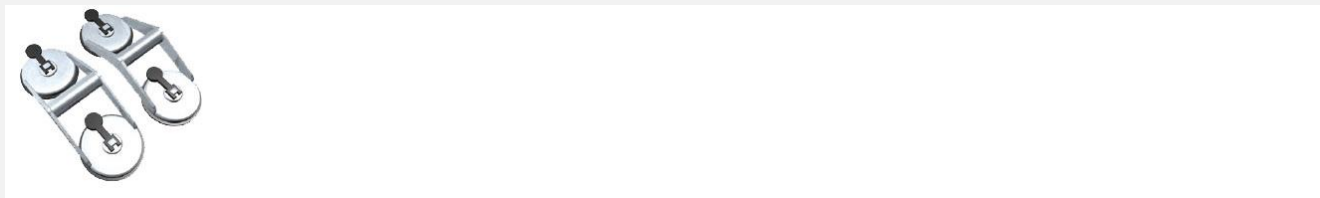
6. Art. Description - WALL LOCKING PLATE. *(Not found? Move to the next step.)* Secure the WALL LOCKING PLATE tightening the middle screw. Feel free to add the additional screws if needed.

MOUNTING YOUR AD NOTAM

ON WALL MOUNTING – FINAL ASSEMBLY

Your own ad notam has been pre-assembled according to your configuration instruction. The product back view including pre-assembled items is visible on your *shop drawing Page 3 (Back View)* you can find additional information on the visible items on *page 4 (Legend - Back View)*. The product Wall View is visible on *shop drawing page 5 (Wall View)*. Consult your *shop drawing page 6 (Legend - Wall View)* for additional information concerning spare parts necessary for installation. Refer to these pages during installation.

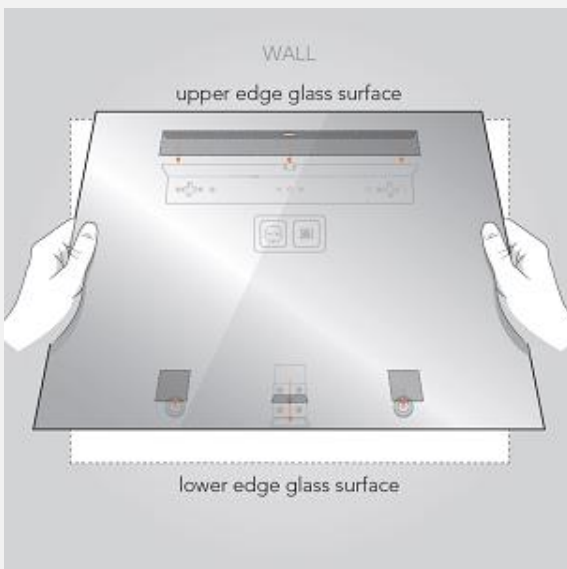
✓ EXPERT TIPS – TOOLS



Glass Suction Cups

STEP 3 - FINAL ASSEMBLY

1. The following slides explain how to identify, mount and secure your ad notam to the wall. ad notam provides different mounting combinations. Verify your own *shop drawing page 6 (Wall View – Legend)* and *shop drawing page 4 (Back View – Legend)* to identify your monitor mounting option. The column Art. Description provides the description of the selected items necessary for your installation.
 - ✓ ENVIRONMENT. ad notam mounting systems are engineered for vertical use only. Verify walls' verticality and items vertical and horizontal alignment to prevent serious injuries and product damage.
 - ✓ ENVIRONMENT. Clean the handling and installation environments properly before installation.
 - ✓ EXPERT TIPS. You prepared the wall marking the points, installed the necessary items. After cleaning the installation environment you can proceed with the final assembly. Evaluate your handling clearance. Cushion the handling area properly using soft anti-slip mats. Lay the items gently on these cushioned anti slip surfaces when needed.
 - ✓ HANDLING. Cushions the floor properly using soft anti-slip mats near the handling areas. Lay the items gently on these cushioned anti slip surfaces when needed.
 - ✓ HANDLING. Tilt the mirror and DFU top to the wall with an adequate angle of incidence when resting.
2. Art. Description Verify your own *shop drawing page 6 (Wall View – Legend)* and *shop drawing page 4 (Back View – Legend)* to identify your final assembly option. The column Art. Description provides the description of the selected items necessary for your installation



3. Art. Description - WALL MOUNTING PLATE. (*Not found? Move to the next step.*) The GLASS MOUNTING PLATE (counterpart for WALL MOUNTING PLATE) is pre-mounted to the back side of the glass. Use the suction cups to elevate the crystal in order to secure the slide-in mechanism. The glass upper edge middle point is marked using a red strip, align this to the red strip on the wall to easily identify the anchor point.
4. Art. Description - FIXATION MAGNET. (*Not found? Move to the next step.*) Gently bring the bottom part of the crystal in vertical position the magnets will pull and hold the crystal providing additional support.
5. Art. Description - WALL LOCKING PLATE. (*Not found? Move to the next step.*) Secure the crystal on the wall screwing the locking bolt with a lock washer bottom up through the GLASS LOCKING PLATE (pre-mounted to the crystal) and WALL LOCKING PLATE.

ADJUSTING YOUR DIGITAL CLOCK (OPTIONAL)

The digital clock features bright white LED digit design, and can be combined with any of the ad notam glass and mirror options for a cool complete glowing look. A backup battery provides power to the digital clock when the primary source of power is interrupted or unavailable.



DISPLAY ON/OFF

Use the power/esc key to toggle the clocks display between ON and OFF mode.



SETTING TIME USING NUMERIC KEYS

You can set the time of the digital clock by using the numeric keys on the remote. To do so please follow the following steps:

STEP 1

Press the time key to enter the time setting mode.



STEP 2

Press the numeric keys in a sequence representing the desired time. For example to set the clock to 14:35 please press the numeric keys in the following order: 1, 4, 3 and 5.



In order to exit the time setting mode, at any time, WITHOUT saving your changes please press the power/esc key.

SETTING TIME FORMAT (12H/24H)

You can choose the time format between 12 hours and 24 hours display. To do so please follow the following steps:

STEP 1

Press the edit key to enter the format setting mode.



STEP 2

Press the up or down keys to change the time format display.



STEP 3

Press the enter key to confirm your changes and exit format setting mode.



ad notam[®]

MAGIC
MIRROR[®]

MIRROR IMAGE[®]

ad notam[®], MIRROR IMAGE[®] and MAGIC MIRROR[®] are licensed trademarks of ad notam.



HDMI, the HDMI logo and high definition multimedia interface are trademarks of HDMI Licensing LLC.

This product, parts, components and the assembly are protected by or might be part of one or more of the following intellectual property rights:

US 7455412 B2
US 7589893 B2
EP 1168285 B2
EP 1429308 B2
EP 1809828 B1



ad notam[®]

HIDDEN TECHNOLOGY – TECHNOLOGY BECOMES INVISIBLE.

To solve any ad notam product related problem, you can consult our online support. You can select your language and enter your product model number.

Go to www.ad-notam.com

SERVICE & SUPPORT

Warranty terms apply
Damaged goods terms apply
RMA procedure terms apply

For more detailed info please visit our website at:
www.ad-notam.com

CONTACT INFORMATION

ad notam AG
www.ad-notam.com

Copyright © 2015 by ad notam. All Rights Reserved.

This Manual, as a whole, in part or excerpts, may not be reproduced, copied, stored in data retrieval system or transferred electronically, mechanically or in any other way, shape or form without prior written authorization by ad notam.

Specifications of the ad notam products are subject to unannounced changes. This manual may thus not reflect the current technical status of ad notam's product.